

# Concealed Bi-folding Door Track System (RB-04)

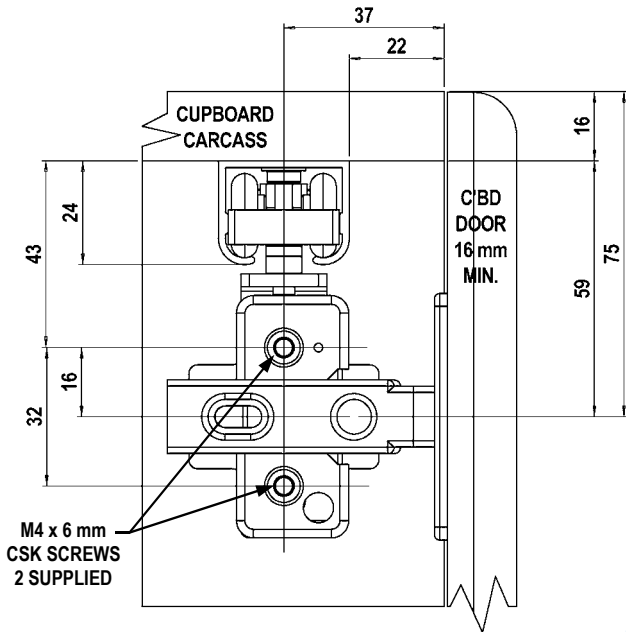


FIG. 3 - END VIEW

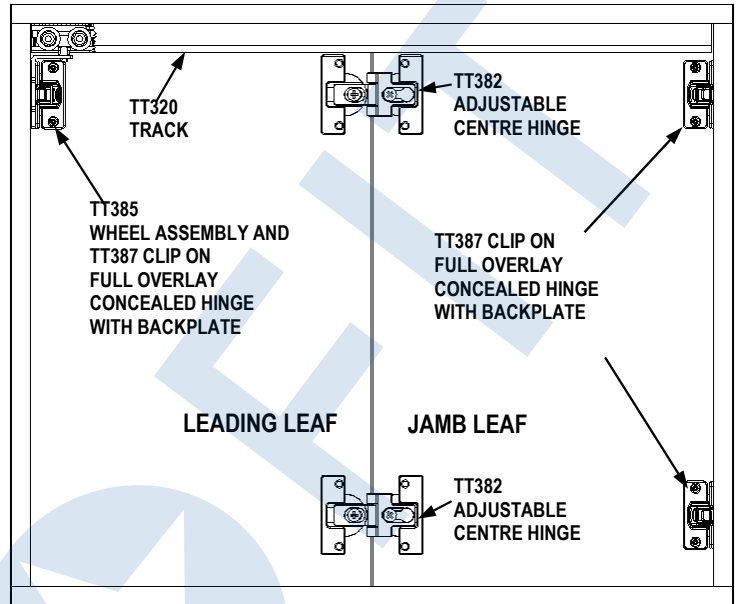


FIG. 4 - REAR VIEW (showing 2 Leaf Application up to 1000 mm High)

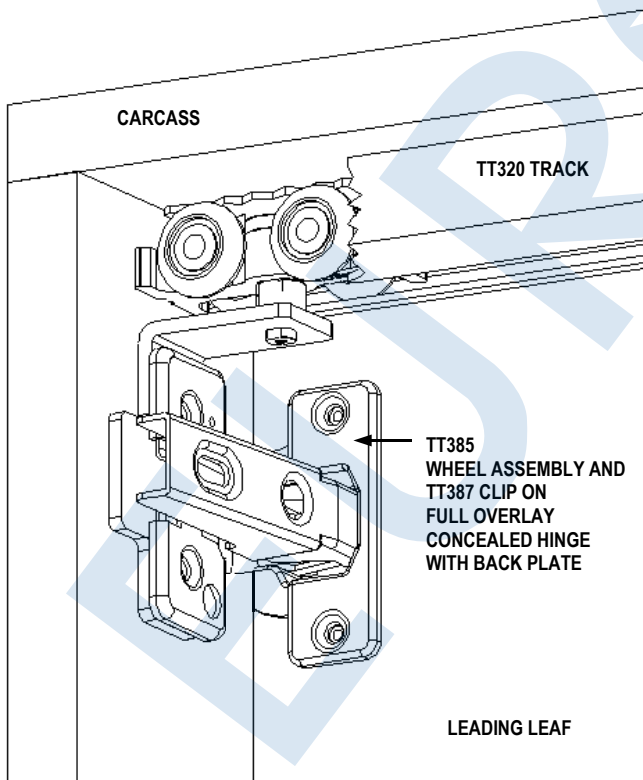


FIG. 5 - WHEEL ASSEMBLY WITH CONCEALED HINGE (Showing Track Cut Away)

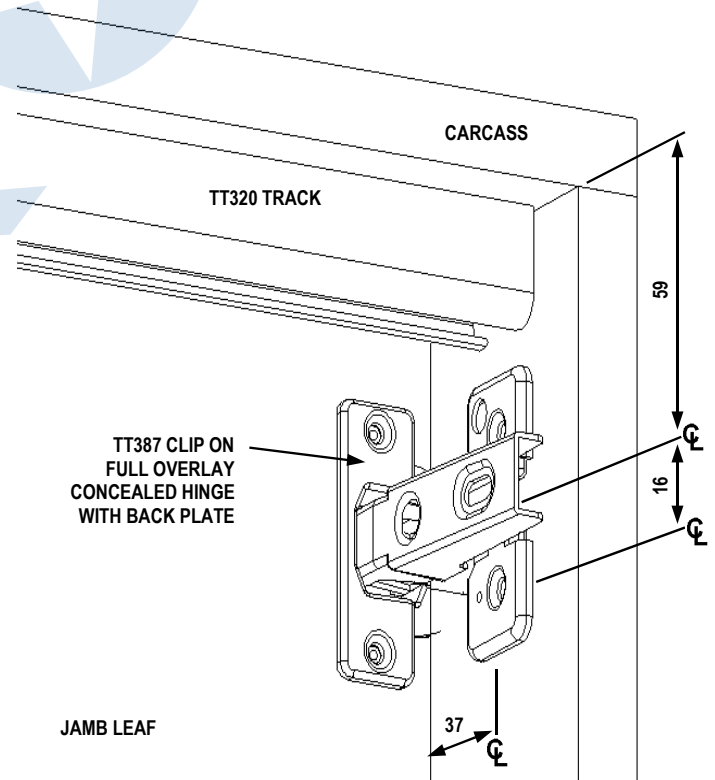


FIG. 6 - CONCEALED HINGE

# Concealed Bi-folding Door Track System (RB-04)



**P385 PACK CONTENTS:**

| ITEM    | DESCRIPTION  | QTY. |
|---------|--|------|
| TT38500 | WHEEL ASSEMBLY                                       | 1    |
| TT38700 | CLIP ON FULL OVERLAY CONCEALED HINGE WITH BACK PLATE | 3    |
| TT38200 | ADJUSTABLE CENTRE HINGE                              | 2    |
| XF0385  | M4 x 6 mm CSK PHILLIPS HEAD SCREW Z/P                | 2    |
| XF1070  | #4 x 16 mm (5/8") COUNTERSUNK PHILLIPS SCREW Z/P     | 18   |
| HMC152  | INSTALLATION INSTRUCTON SHEET (THIS SHEET)           | 1    |

**TOOLS REQUIRED:**

- TAPE MEASURE
- PENCIL
- ROUTER
- DRILL
- Φ35 mm ROUTER BIT
- Φ2.0 mm DRILL BIT
- PHILLIPS SCREWDRIVER

**AVAILABLE SEPARATELY:**

- TT320 ALUMINIUM TRACK, AVAILABLE IN LENGTHS:  
2000, 2500, 3400, 4500 mm IN MILL FINISH, AND  
4500 mm IN CLEAR ANODISED
- TT38500 WHEEL ASSEMBLY
- TT38700 CLIP ON FULL OVERLAY CONCEALED HINGE WITH BACK PLATE
- TT38200 ADJUSTABLE CENTRE HINGE

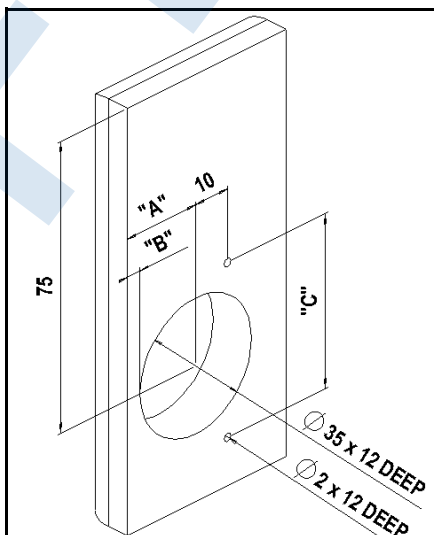
**RECOMMENDED REQUIREMENTS:**

- MINIMUM DOOR THICKNESS: 16 mm.
- MAXIMUM DOOR THICKNESS: 19 mm.
- MAXIMUM DOOR LEAF WIDTH: 600 mm.
- MAXIMUM DOOR HEIGHT: 2100 mm (1000 mm FOR P385 CONTENTS).

**HINGE REQUIREMENTS FOR DOOR HEIGHT UP TO:**

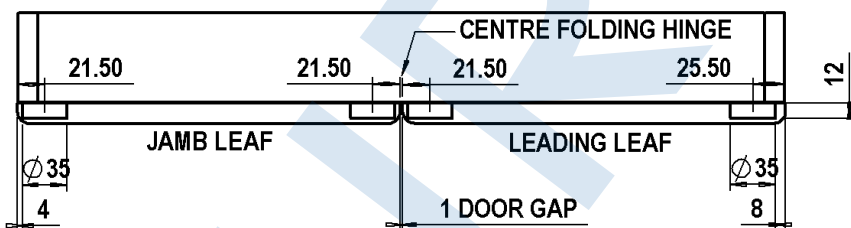
- 1000 mm = 2 HINGES\* + 1 HINGE FOR WHEEL (P385 PACK).
- 1500 mm = 3 HINGES\* + 1 HINGE FOR WHEEL
- 2000 mm = 4 HINGES\* + 1 HINGE FOR WHEEL
- 2100 mm = 5 HINGES\* + 1 HINGE FOR WHEEL

\* DENOTES: 1 x TT38700 CONCEALED HINGE WITH BACK PLATE AND 1 x TT38200 ADJUSTABLE CENTRE HINGE.



- "A" = 21.5 FOR CONCEALED HINGE  
25.5 FOR WHEEL ASSEMBLY
- "B" = 4 FOR CONCEALED HINGE  
8 FOR WHEEL ASSEMBLY
- "C" = 45 FOR CONCEALED HINGE  
52 FOR CENTRE HINGES

**FIG. 2 - HINGE RECESS DETAIL**

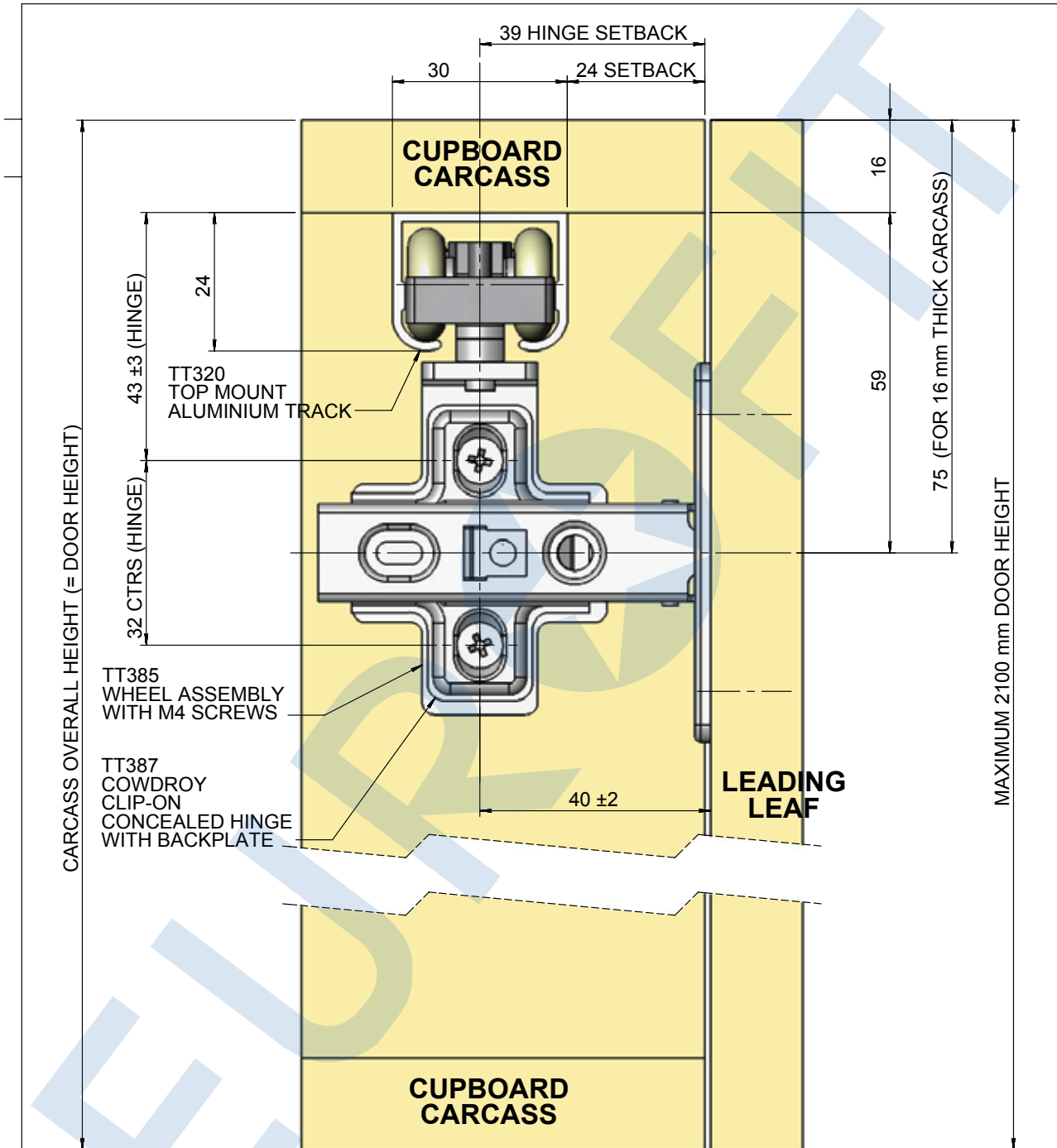


**FIG. 1 - TOP VIEW DETAIL**

**INSTALLATION INSTRUCTIONS:**

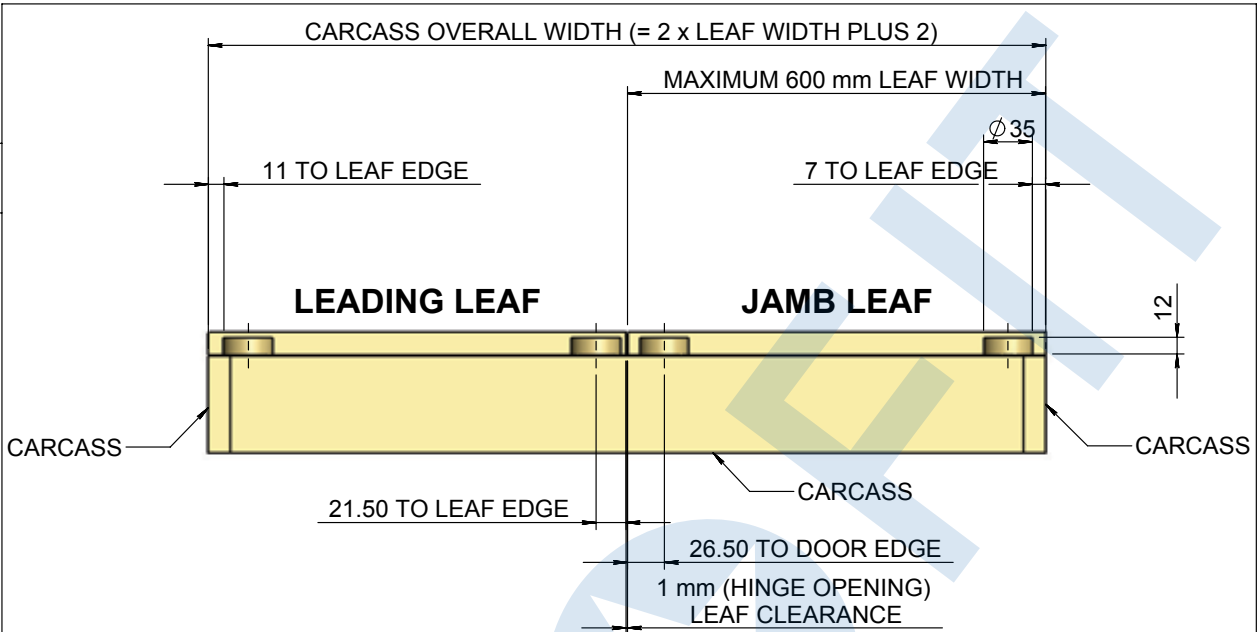
- 1) PREPARE DOORS AS SHOWN IN FIG. 1 - TOP VIEW DETAIL AND FIG. 2 - HINGE RECESS DETAIL. IF DOORS ARE TO COVER TOP AND BOTTOM PANELS OF CARCASS, THE SETDOWN TO CENTRE OF HINGE IS 75 mm FOR A 16 mm THICK CARCASS.
- 2) FIX CENTRE HINGES AND CONCEALED HINGES TO HINGE RECESSES CUT INTO DOORS.
- 3) UNCLIP BACK PLATE FROM DOOR FOR WHEEL ASSEMBLY AND FIX HINGE BACK PLATE ONTO WHEEL ASSEMBLY USING THE TWO M4 x 6 mm CSK SCREWS SUPPLIED.
- 4) CUT TRACK TO LENGTH TO SUIT INTERNAL CARCASS WIDTH, AND PLACE WHEEL ASSEMBLY WITH BACK PLATE INTO TRACK, BY ENSURING BRACKET IS POSITIONED IN THE CORRECT DIRECTION AS SHOWN IN FIG. 5.
- 5) MARK OUT AND FIX TRACK INTO POSITION AS SHOWN IN FIG. 3 - END VIEW. IF DOORS ARE TO COVER END PANELS OF CARCASS, THE SETBACK TO FRONT OF TRACK IS 22 mm.
- 6) UNCLIP BACK PLATES FROM DOOR AND FIX HINGE BACK PLATES AS SHOWN IN FIG. 6 - REAR VIEW OF HINGE, AT 37 mm CENTRES IN FROM FRONT OF CARCASS AND AT 75 mm CENTRES FROM TOP AND BOTTOM OF CARCASS.
- 7) CLIP CONCEALED HINGES TO CARCASS BACK PLATES, TEST OPERATION OF HINGES AND ALIGN AS NECESSARY.
- 8) CLIP CONCEALED HINGE ONTO WHEEL ASSEMBLY, TEST OPERATION OF HINGES AND ALIGN AS NECESSARY.
- 9) MAKE ANY FINAL ADJUSTMENTS TO ENSURE SMOOTH OPERATION OF SYSTEM.

# Concealed Bi-folding Door Track System (RB-04)

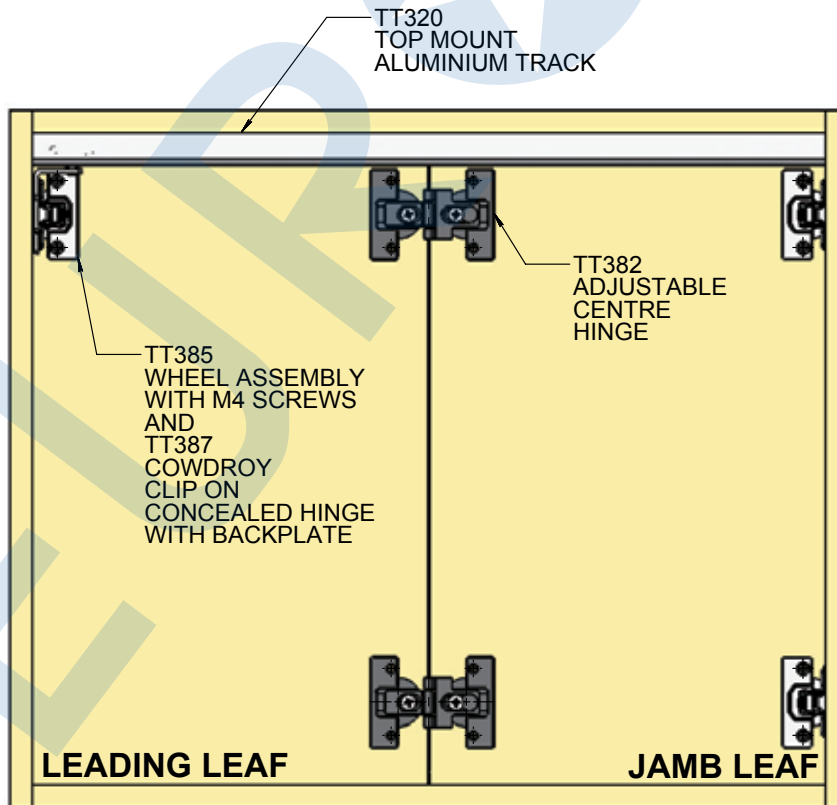


END VIEW  
LEADING LEAF WITH WHEEL ASSEMBLY  
IN FULL OVERLAY APPLICATION

# Concealed Bi-folding Door Track System (RB-04)



TOP VIEW  
TOP MOUNTED  
IN FULL OVERLAY APPLICATION



BACK VIEW  
TOP MOUNTED - (Showing 2 Leaf Application up to 1000 mm High)  
IN FULL OVERLAY APPLICATION