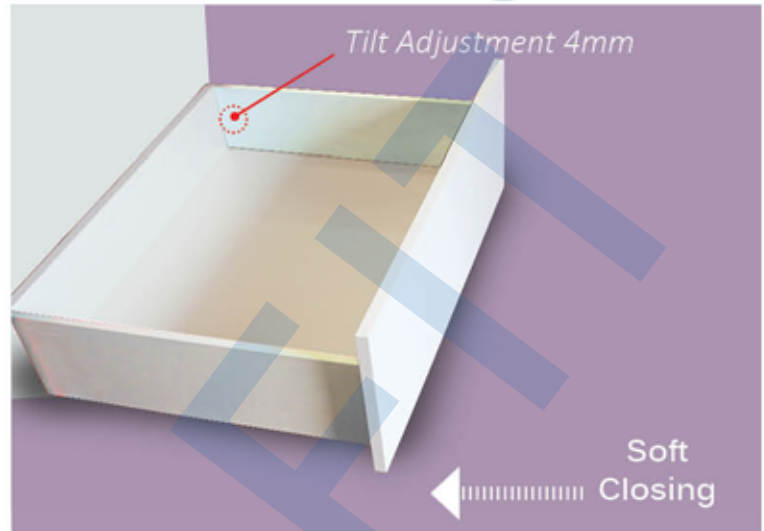


Vero Slim Drawer Systems 121mm Height

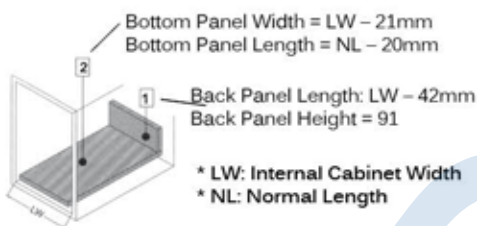
- * 13mm Ultra Slim Drawer Sides
- * Certified 60,000 Opening & Closing Cycles
- * Silent, Soft & Dual Damping
- * Standard Packing:
1 Complete Set Per Box

Load Capacity: 35kg Colour: White

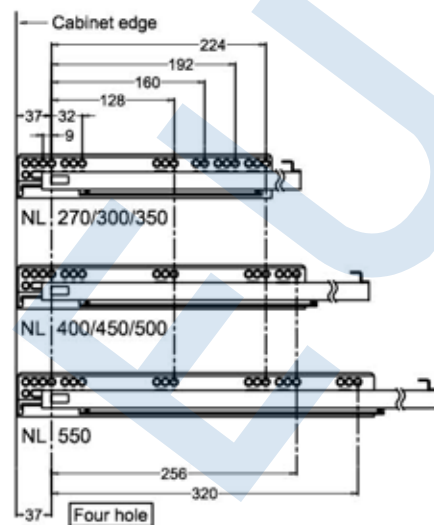
Item No.	Drawer Length
SC-802-270K	270
SC-802-350K	350
SC-802-400K	400
SC-802-450K	450
SC-802-500K	500
SC-802-550K	550



Drawer Back & Bottom Dimensions

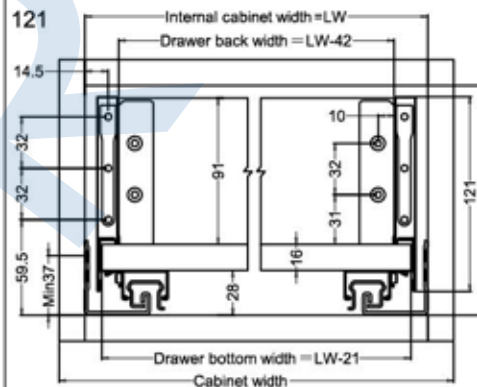
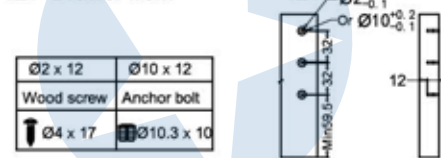


Screw Positions Of The Sides

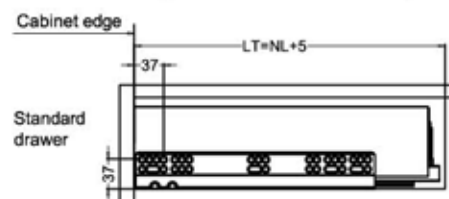


Drawer Installation Dimensions (mm)

121 Drawer front

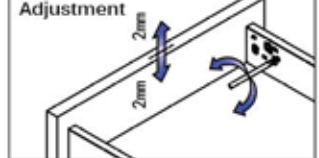


Nominal slide length = NL Internal cabinet depth = LT

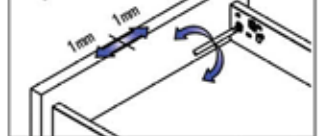


Drawer Adjustment

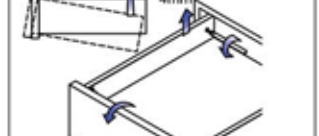
Up & Down Adjustment



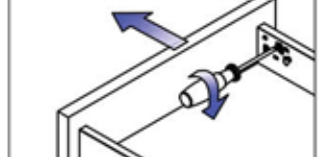
Left & Right Adjustment



Tilt Adjustment



Removal Drawer Front



Removal Drawer

