

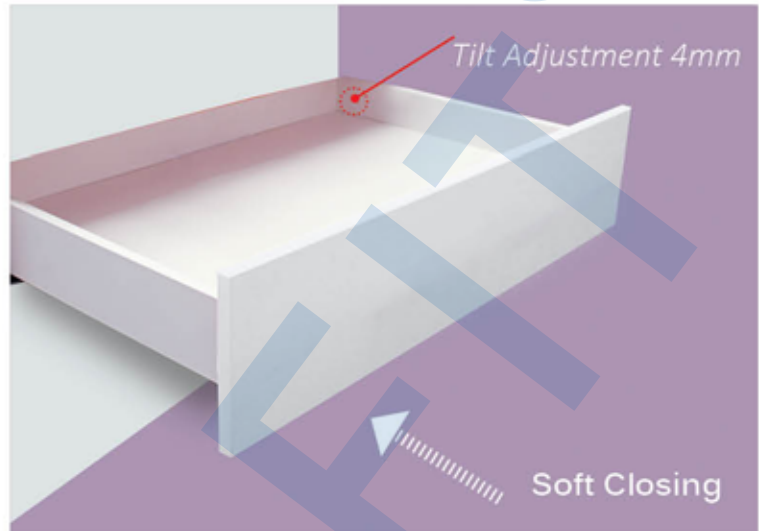


Vero Slim Drawer Systems 89mm Height

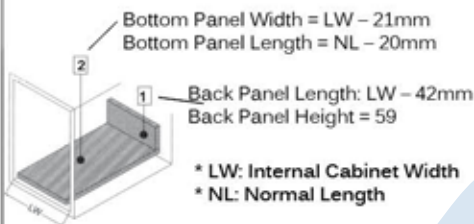
- * 13mm Ultra Slim Drawer Sides
- * Certified 60,000 Opening & Closing Cycles
- * Silent, Soft & Dual Damping
- * Standard Packing:
1 Complete Set Per Box

Load Capacity: 35kg Colour: White

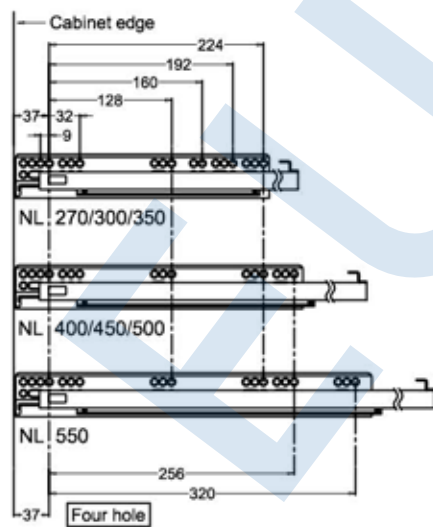
Item No.	Drawer Length
SC-801-270M	270
SC-801-350M	350
SC-801-400M	400
SC-801-450M	450
SC-801-500M	500
SC-801-550M	550



Drawer Back & Bottom Dimensions

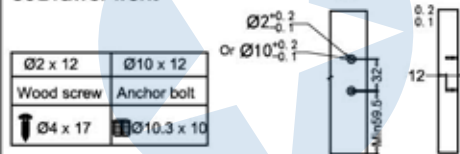


Screw Positions Of The Sides

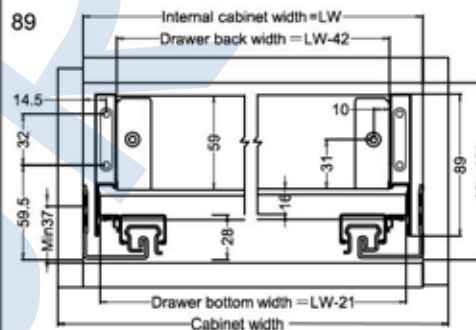


Drawer Installation Dimensions (mm)

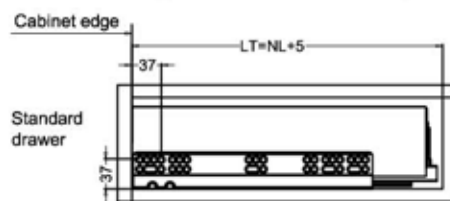
89Drawer front



LW=Internal cabinet width

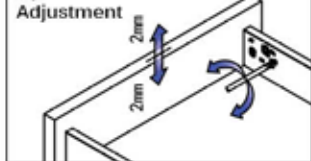


Nominal slide length=NL Internal cabinet depth=LT

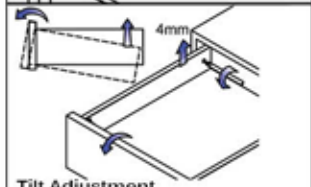
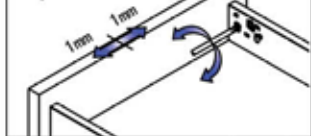


Drawer Adjustment

Up & Down Adjustment

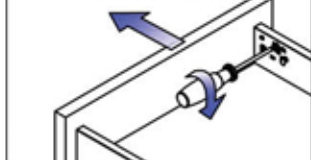


Left & Right Adjustment



Tilt Adjustment

Removal Drawer Front



Removal Drawer

