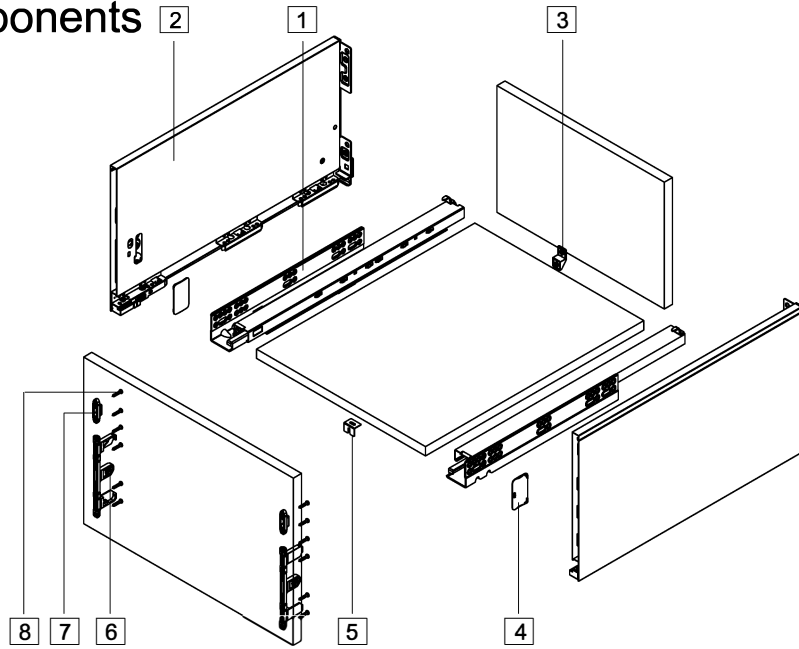


Vero Slim Drawer Height 249mm 804E

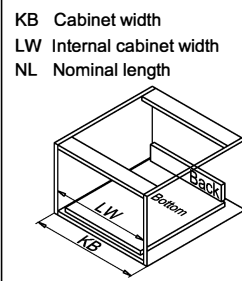
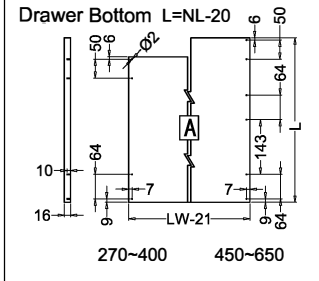
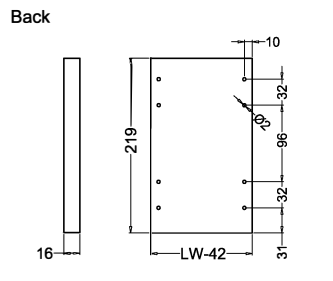
Components



1.Cabinet profiles: L/R	
2.249 Drawer profiles: L/R	
3. Back fixing(for wide drawer)	
4.Side cover plate	
5. Bottom fixing(for wide drawer)	
6.185 Front fixing-brackets	
7.249 Front fixing-brackets	
8. Front fixing-brackets screw (Ø4x17)	

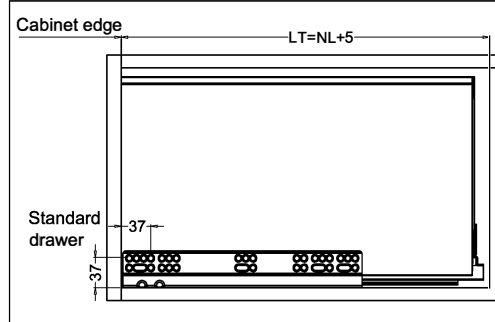
Item No.	Nominal length	Internal drawer length	Min.installation length of drawer
804-270	270mm	244mm	275mm
804-350	350mm	324mm	355mm
804-400	400mm	374mm	405mm
804-450	450mm	424mm	455mm
804-500	500mm	474mm	505mm
804-550	550mm	524mm	555mm
804-600	600mm	574mm	605mm

Drawer Back and Bottom Dimensions



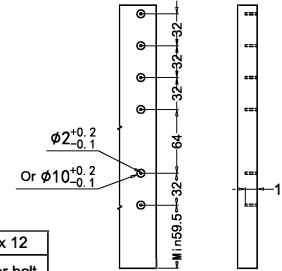
Installation dimensions (mm)

Nominal slide length=NL

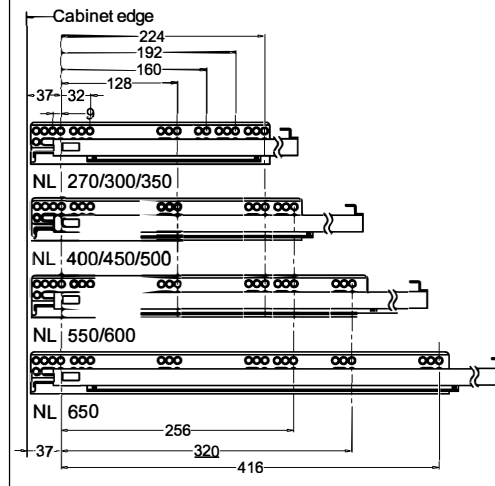


Drawer installation dimensions (mm)

249 Drawer front

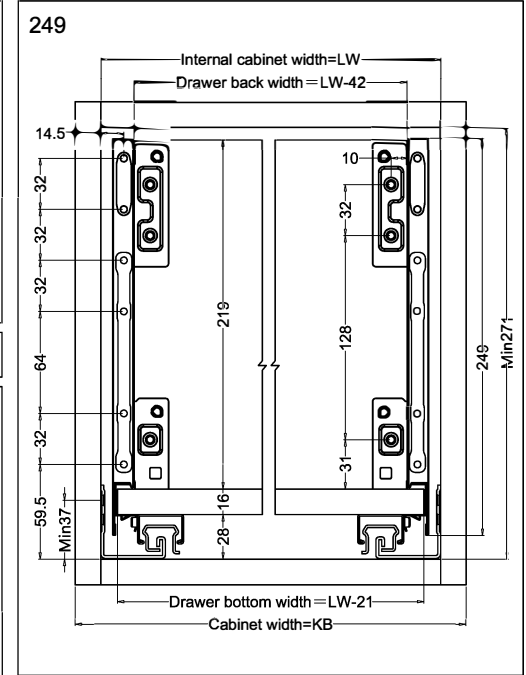


Screw positions of the sides



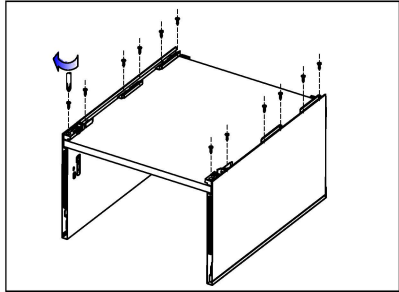
Drawer installation dimensions (mm)

LW=Internal cabinet width

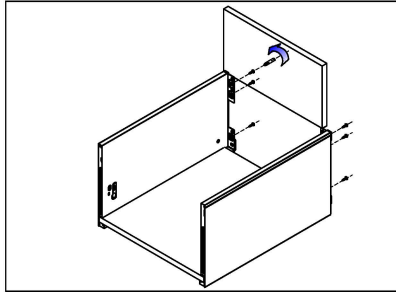


Vero Slim Drawer Height 249mm metal drawer

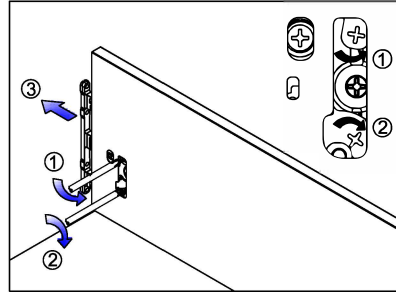
Assembly removal and adjustment Drawer assembly



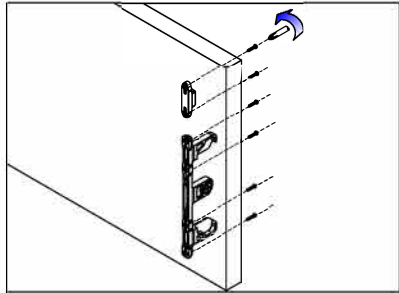
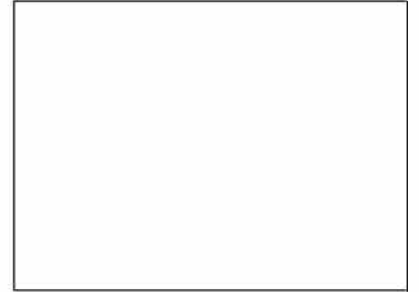
Bottom assembly



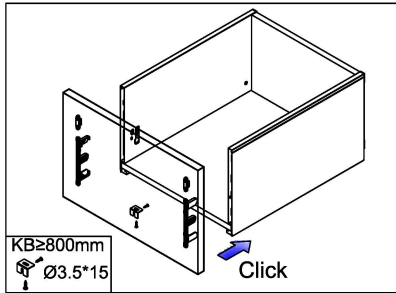
Back assembly



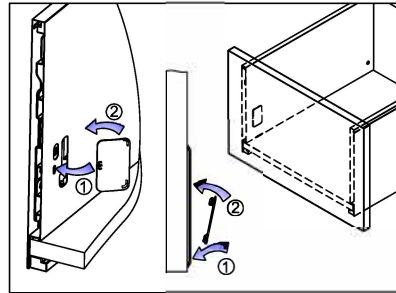
Front bracket release



Front bracket assembly



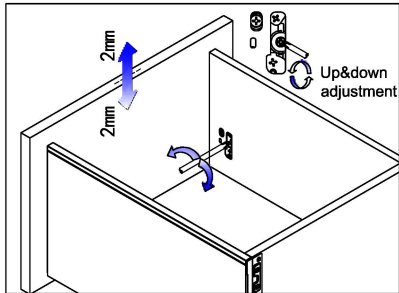
Front assembly



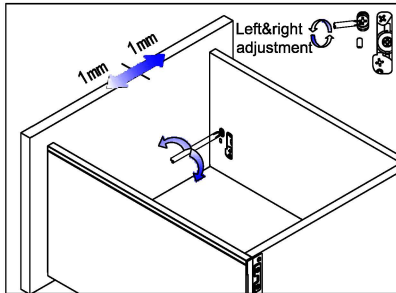
Inside Wall Cover assembly



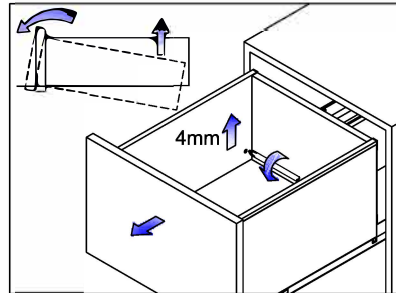
Adjustment



Up&down adjustment



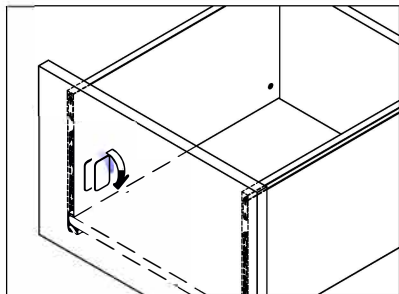
Left&right adjustment



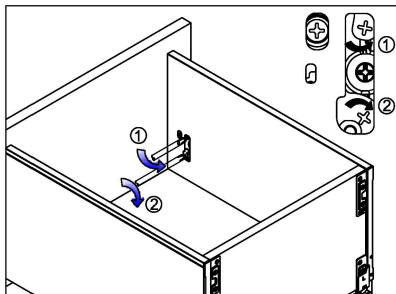
Front slope angle adjustment



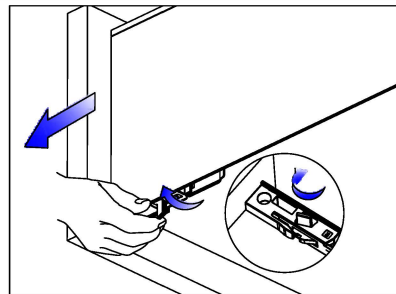
Removal



Tip up the cover and pull out



Removal drawer front



Removal drawer

